

## Iron Rite® Technical Data

Overall length	55"
Overall depth	15 ½"
Overall height	44 ¼"
Net weight	220 lbs.
Shipping weight	300 lbs.
Ironing width	36"
Heated roll diameter	5 ½"
Pressure roll padding	Heat resistant synthetic
Feeding	Automatic conveyor
Motor	1/15 H.P. combination motor/gear reduction
Heating	2,500 Watts-Enclosed element

### Electrical Specifications Available

240 Volts; 50 Hertz; 1-Phase-12 amps (20 amp Breaker)  
240 Volts; 60 Hertz; 1-Phase-12 amps (20 amp Breaker)

Distributed By:



CMV Sharper Finish, Inc.  
4500 Augusta Boulevard  
Chicago, IL 60651 U.S.A.

773-276-4800 • Fax 773-276-6878

1-800-247-IRON (4766)

e-mail: [sales@cmvsharperfinish.com](mailto:sales@cmvsharperfinish.com)

[www.cmvsharperfinish.com](http://www.cmvsharperfinish.com)

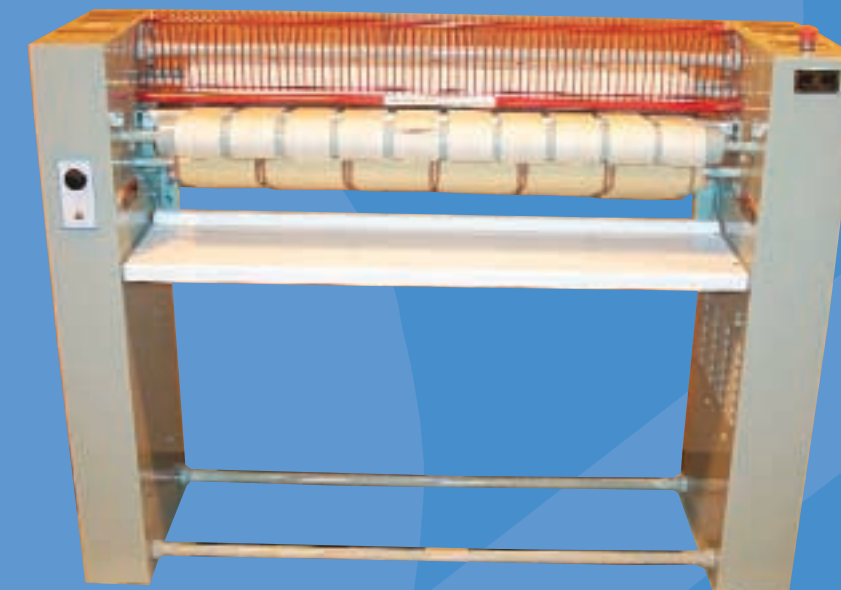
Form No. CMV 5074

Copyright 2003 by CMV Sharper Finish, Inc.

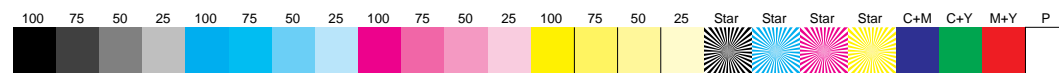
In view of CMV Sharper Finish's policy of providing you with the best products possible, we reserve the right to change product specifications and appearance without notice. Contact the sales department for exact specifications, dimensions, and product approvals. CMV Sharper Finish has manufactured flatwork ironing equipment since 1911, making over 100 different models that are sold throughout the world.



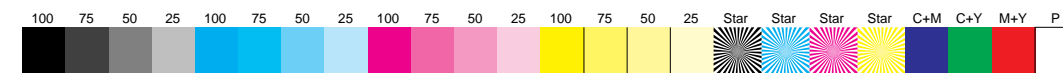
CMV SHARPER FINISH, INC.



IRON RITE®



GATF/DK&A Digital 5.5 in. Four-Color Control Bar (version 1.0) © 1997 Graphic Arts Technical Foundation



GATF/DK&A Digital 5.5 in. Four-Color Control Bar (version 1.0) © 1997 Graphic Arts Technical Foundation



**YOURS?**

## *The Difference Is Obvious*

### *The Choice Is Yours*

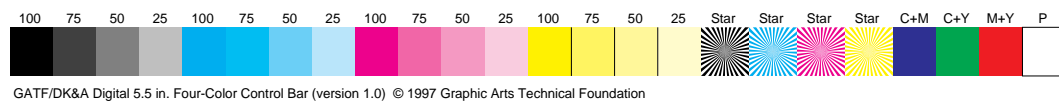


**OURS!**

Designed, manufactured, and printed in the United States of America



Designed and Built in the U.S.A.



GATF/DK&A Digital 5.5 in. Four-Color Control Bar (version 1.0) © 1997 Graphic Arts Technical Foundation

Beautifully ironed flatwork is not a luxury; it's a must. A well-prepared meal can lose its appeal by a poorly ironed tablecloth and napkins.

Fine chefs frequently say, "you take the first bite with your eyes."

Until now, ironing of flatwork such as tablecloths and napkins was accomplished by either sending the work out or by installing a rather large and expensive flatwork ironer. For limited volumes neither of these solutions are desirable.

Now, in about the same space required by a household ironing board, you can install the Iron Rite® and produce up to ten times the amount of work and higher quality than can be done by the average person on an ironing board.

Simply place the flatwork to be ironed on the automatic feeding conveyor and guide it into the machine. Just the right amount of heat and pressure is applied to produce a fine finish. A single pass is all that is required on most single thickness items while two passes are usually required on double thickness items such as pillow cases or table cloths that have been folded due to their size.

The ironed article is deposited on the receiving table ready for final folding.

The Iron Rite® is simply connected to your 230 electrical supply and is ready to run. No vent or other connections are required. Total operating cost is less than fifty-cents per hour when producing maximum capacity.

In just one hour, you can beautifully iron all of this flatwork:

180	or	60	or	30
Blended		Blended		54" x 54"
Napkins		Pillow Cases		Tablecloths

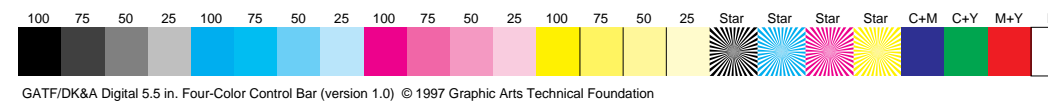
Production capacity of a well designed and manufactured flatwork ironer is governed by many factors, which in most cases are beyond the control of the machine manufacturer. Only years of experience in the manufacturing of this type of machinery and extensive actual hands on working knowledge enables us at CMV Sharper Finish to provide you with realistic, obtainable production data.

In preparing these production figures we have had to assume that certain conditions exist that are consistent with a well managed on premise laundry.

Our assumptions are as follows:

1.) Flatwork to be processed is blended materials containing 50% synthetic and 50% natural fibers.

2.) Moisture content of work to be processed will not exceed 25% and residual moisture content will not exceed 4%.



GATF/DK&A Digital 5.5 in. Four-Color Control Bar (version 1.0) © 1997 Graphic Arts Technical Foundation